

Metsähallitus in Finland

Managing state-owned natural resources

Mika Aho

Business Controller

Metsähallitus Forestry Ltd.



METSÄHALLITUS



Metsähallitus Group

- Metsähallitus manages a third of Finland's land and water areas.
- Metsähallitus is a state-owned enterprise engaged in both business operations and public administration duties.

Metsähallitus Group

Ministry of Agriculture and Forestry

Steers and supervises Metsähallitus with respect to business performance, service and other operational targets

Ministry of the Environment

Steers and supervises Metsähallitus with respect to public administration duties in its own sector

Metsähallitus Group

Group units and service centre

Business units

Metsähallitus Forestry Ltd

Management of state-owned multiple-use forests, sales and marketing of timber

Laatumaa

Estate agency operations relating to holiday properties and forest, and development of wind power business

Subsidiaries

Fin Forelia Ltd

Seedling production and sales

Siemen Forelia Ltd

Seed production and sales

MH-Kivi Ltd

Leasing of soil and rock extraction sites and sale of soil and rock resources

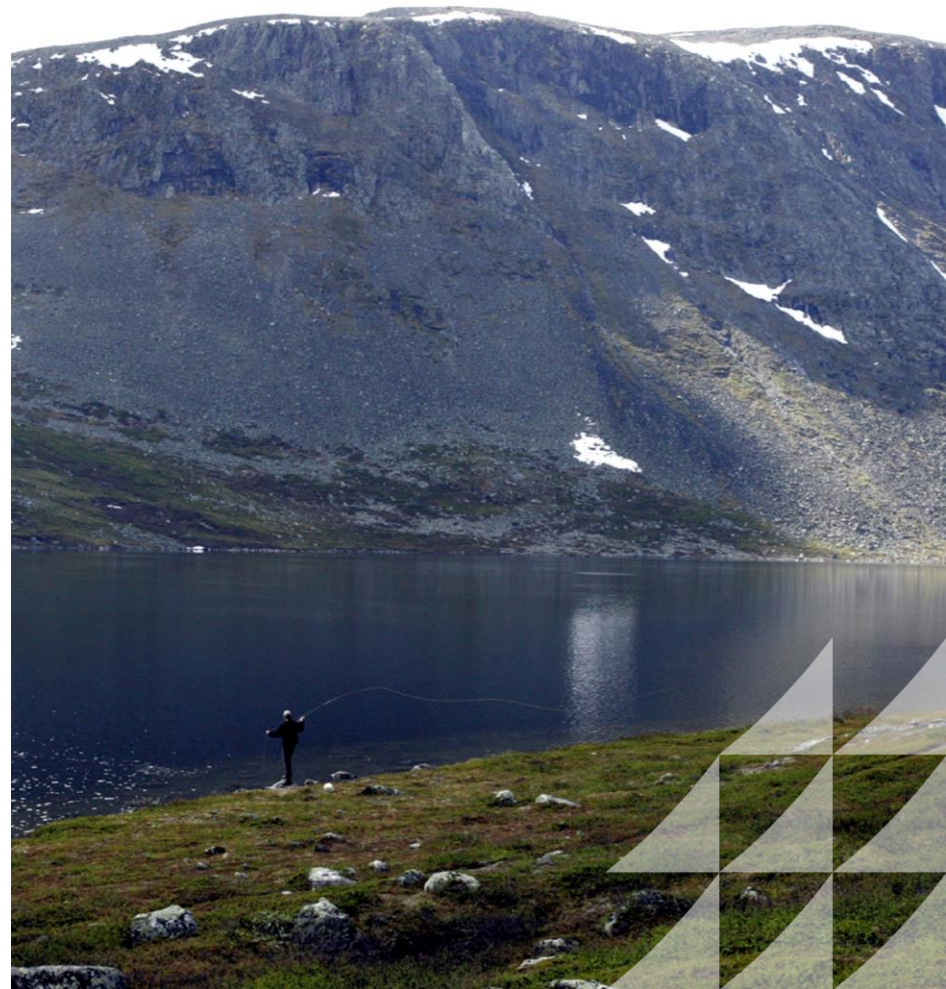
Parks and Wildlife Finland

Management of national parks and other nature conservation, wilderness and state-owned hiking areas; protection of species and habitats; provision of hiking, hunting and fishing services.



Metsähallitus' land and waters

We manage, use and protect state-owned land and water areas to maximise their overall benefits for the good of Finnish society.



Metsähallitus manages:

9 121 000

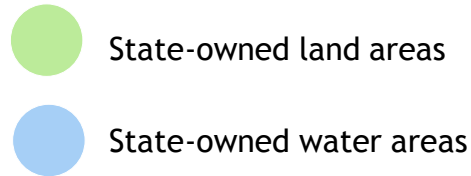
hectares of land.

3 417 000

hectares of waters.

12 538 000

hectares in total.



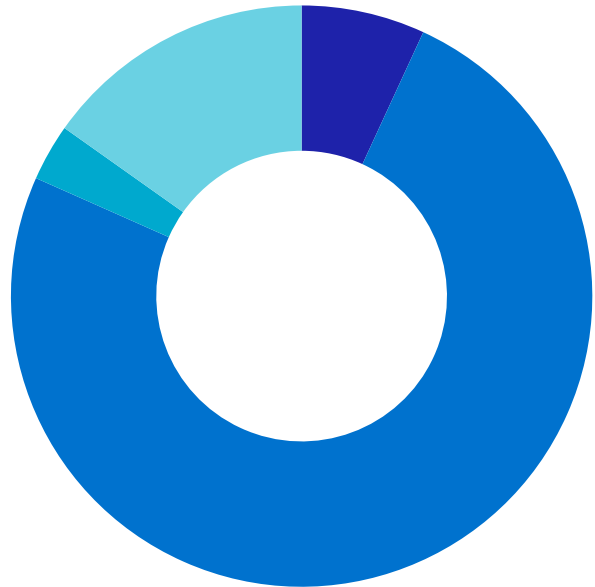
Metsähallitus' land areas*



- Forest land in commercial forests 3,493,000 hectares
- Low-productivity land in commercial forests 722,000 hectares
- Non-productive land in commercial forests 704,000 hectares
- Statutory protected areas 1,518,000 hectares
- Wilderness areas 1,377,000 hectares
- Areas reserved for conservation programmes 598,000 hectares
- Other areas of special value 709,000 hectares



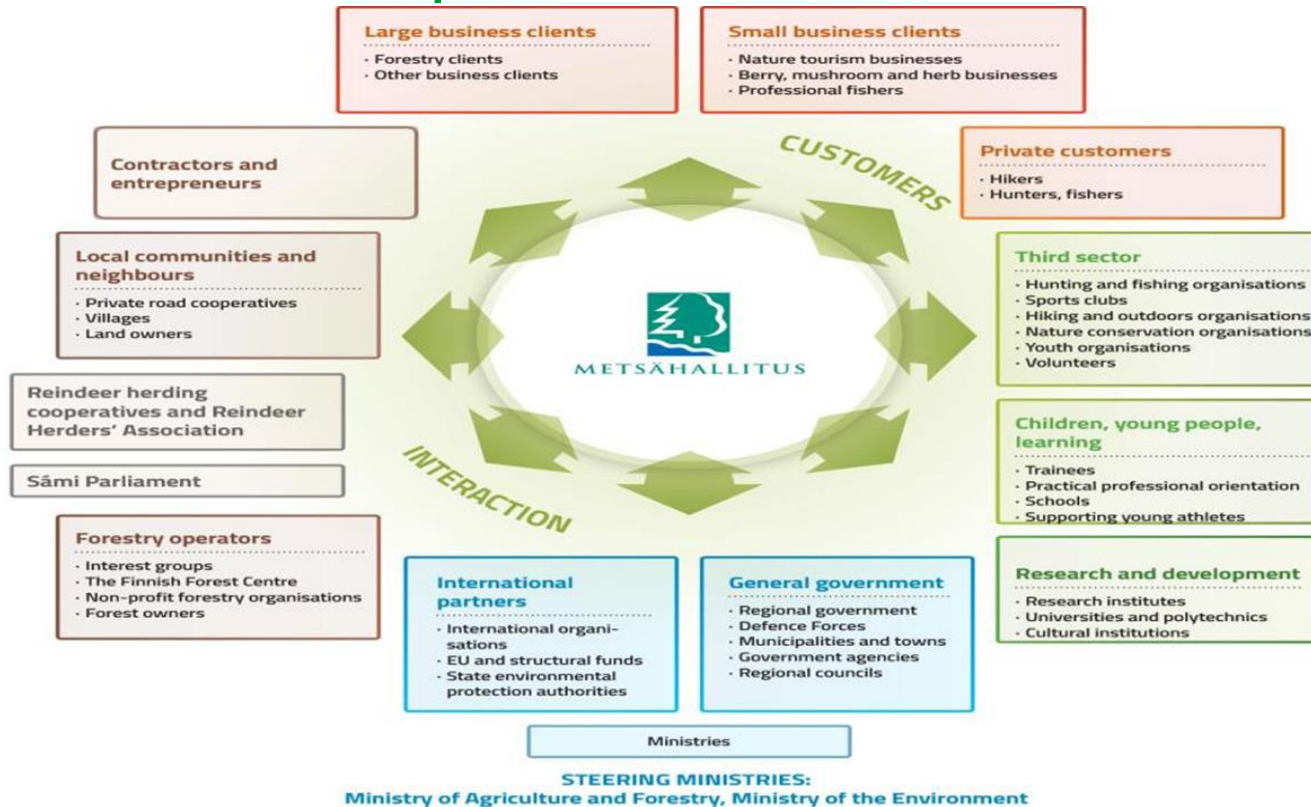
Metsähallitus' water areas *



- Statutory protected areas 235,000 hectares
- Public water areas in sea areas 2,555,000 hectares
- Public water areas in inland water areas 108,000 hectares
- Other water areas 519,000 hectares



Stakeholder co-operation



Values of Metsähallitus

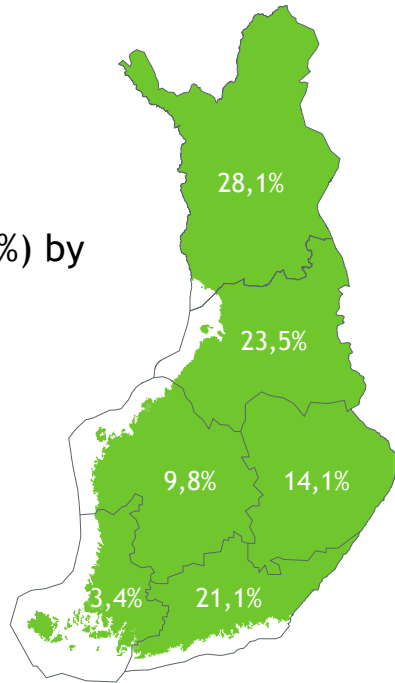
- Responsible management and use of natural resources
- Customer service
- Employee well-being
- Profitability
- Cooperation and partnerships



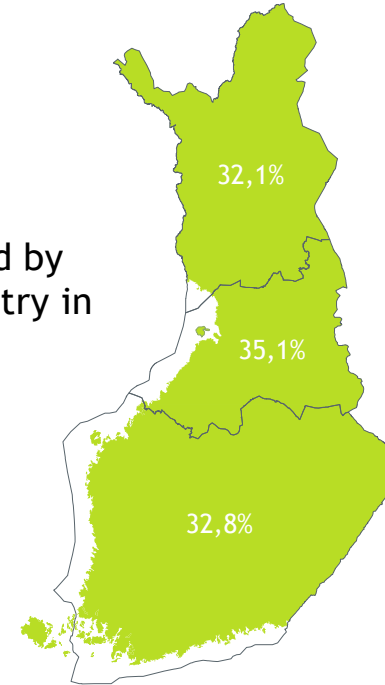
Contributing to regional development

- we provide work for more than 1000 enterprises

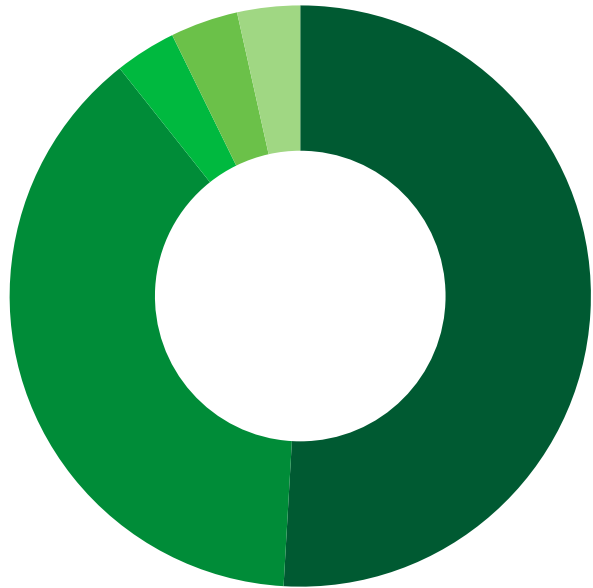
Salary shares (%) by region in 2015



Services outsourced by Metsähallitus Forestry in 2015



Employees stay longer than average



- Forestry 729 person-years
- Parks & Wildlife Finland 550 person-years
- Service Centre 48.8 person-years
- Group units 54 person-years (e.g. legal, finance and communications)
- Laatumaa 50 person-years





Business operations

Financial indicators 2015

Turnover	€ 337 200 000	Return on investment	4.4%
Operating profit	€ 116 200 000	Investment (% of turnover)	5%
Share of turnover	34%	Solvency ratio	98%
Profit	€ 107 900 000	Number of person-years in business operations	999
Dividend (paid to the state)	€ 106 000 000	The Group's total number of person-years	1 549



Metsähallitus Forestry Ltd

- Manages state-owned multiple-use forests and sells wood
- Fosters the biological and cultural diversity of multiple-use forests
- Creates conditions for recreational use and employment
- Generates most of Metsähallitus' revenue



Tree species and products

- **Tree Species**
 - Scots Pine (*Pinus sylvestris*)
 - Norway Spruce (*Picea abies*)
 - Birch (*Betula pendula* and *Betula pubescens*)
- **Products**
 - 40 % logs
 - 60 % pulpwood
 - Energywood 0,6 TWh



Sustainability from forests

- State-owned multiple-use forests are certified under the PEFC certification scheme.
- Certification proves that the wood comes from sustainably managed forests.



Timber is harvested on 2 % cent of the total forest area



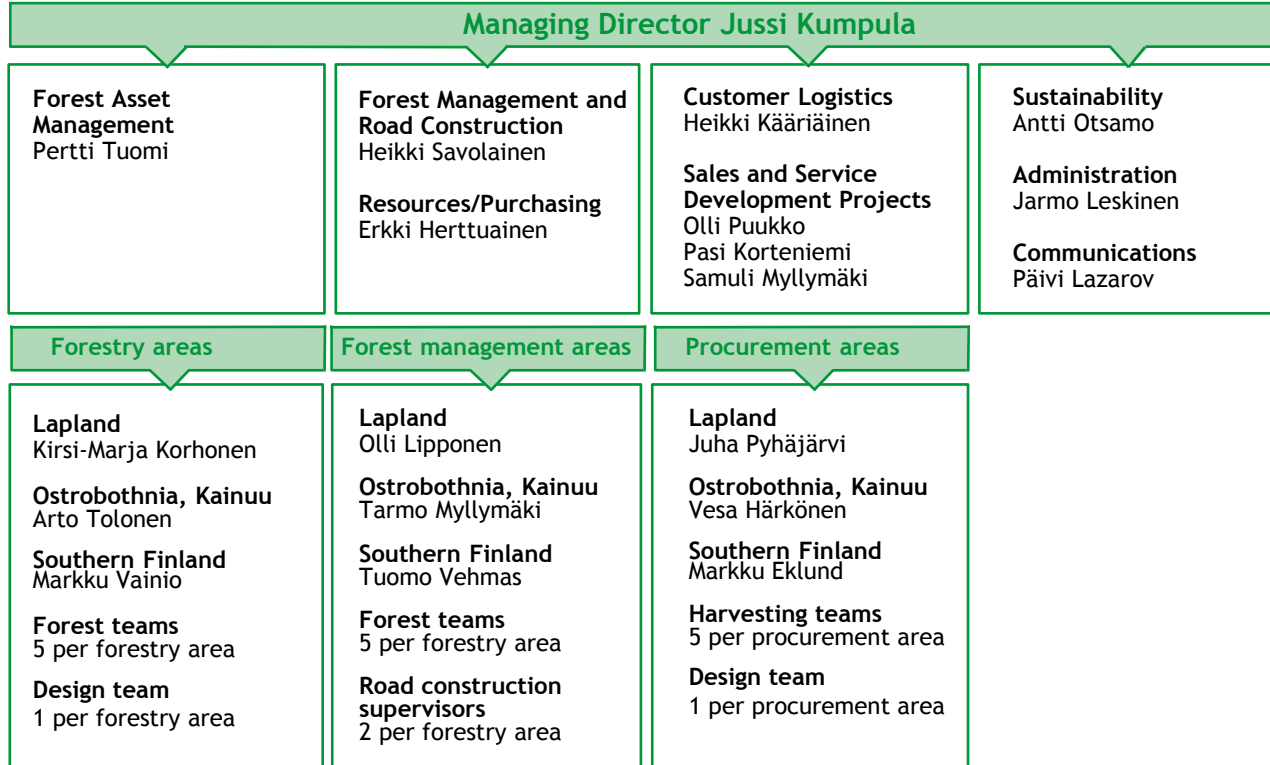
6 000 000 m³
of wood is sold every year



Multiple-use forests grow by
11 000 000 m³ every year



Organisation of Metsähallitus Forestry Ltd





Metsähallitus Laatumaa

- Develops state-owned land and waters in a customer-oriented manner to meet various needs
- Responsible for real estate activities related to holiday plots, forest properties and rock material on state-owned land
- Sells buildings owned by Metsähallitus and purchases forest properties for various government activities
- Develops the wind power business

Metsähallitus' subsidiaries



Leasing of soil and rock extraction sites and sale of soil and rock resources.

FIN FORELIA

Seedling production and sales.

SIEMEN FORELIA

Seed production and sales.

 **METSÄHALLITUS**





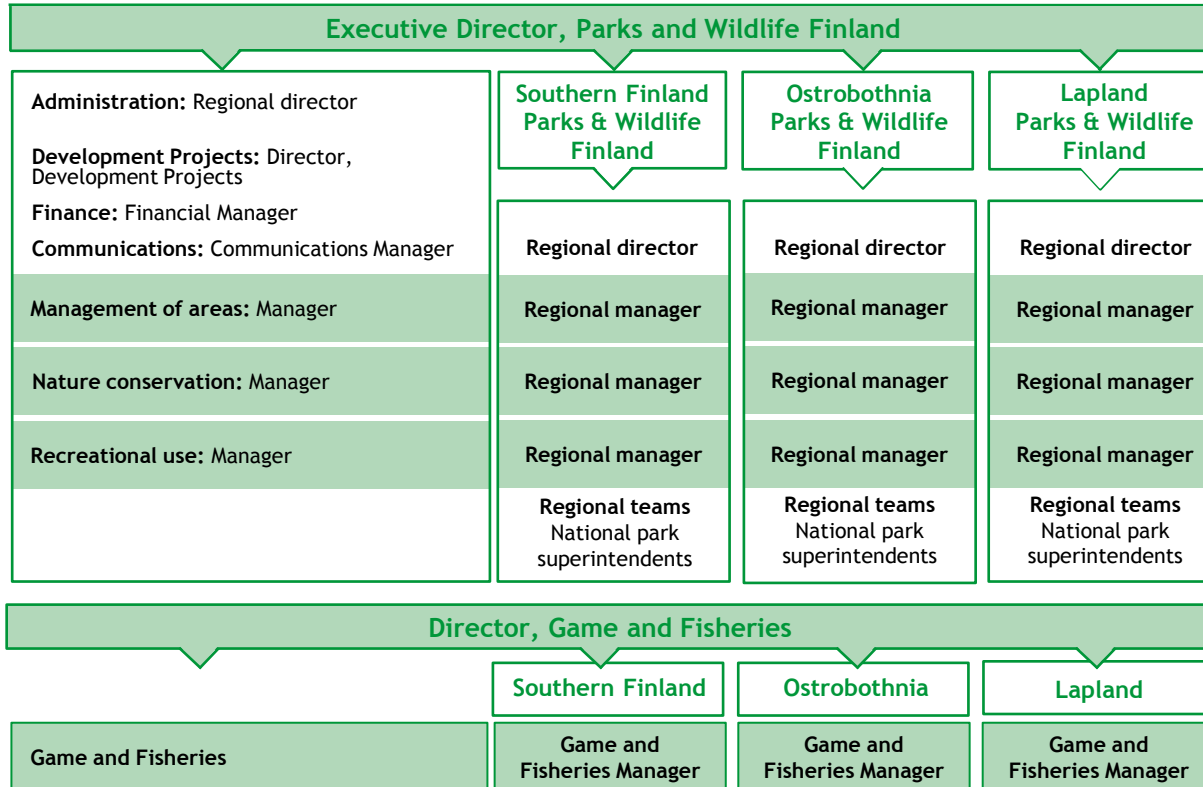
Parks & Wildlife Finland

Public administration: Parks & Wildlife Finland Business Unit

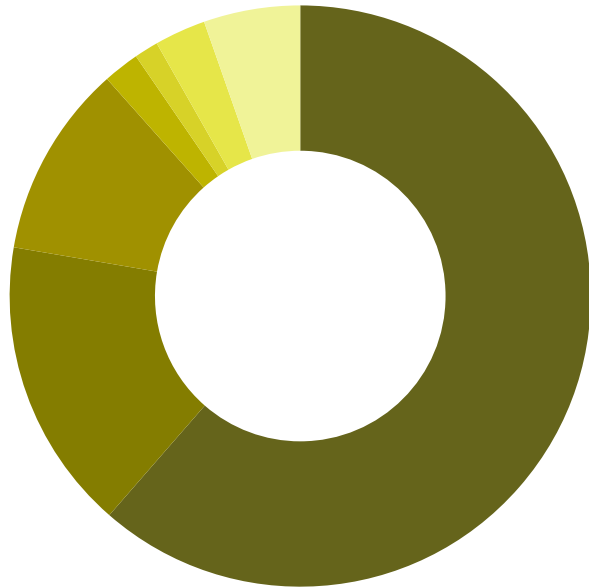
- Responsible for protecting the natural and cultural heritage of areas under its management.
- Offers hiking services to everyone, free of charge.
- Ensures the sustainability of game and fish populations and sells hunting and fishing licenses.



The organisational chart of Parks and Wildlife Finland



Parks & Wildlife Finland's financing in 2015



- Ministry of the Environment € 36.6 million
- Internal financing € 9.7 million
- Ministry of Agriculture and Forestry € 6.4 million
- Ministry of Employment and the Economy € 1.2 million
- Ministry of Justice € 0.8 million
- EU project funding € 1.7 million
- Other financing € 3.2 million





Other activities



Management and supervision ensure sustainable hunting and fishing

56 000

hunting licences sold.

69 000

fishing licences sold.

550 hectares of
restored game habitats.



METSÄHALLITUS

Active management of habitats helps endangered species

4 000 hectares

of managed heritage landscapes every year

Roughly **1 000 hectares**

of restored woodland and marshland every year





Thousands of new cultural heritage sites discovered through a field survey

4 million hectares

of forestry's multiple-use forests surveyed

Over 10 000 protected cultural heritage sites spanning 10 000 years

Cultural heritage survey reports are available as e-publications

Safeguarding the conditions of life

- Cooperation in order to safeguard the Sámi languages and traditional Sámi livelihoods.
- Active measures in favour of keeping the archipelago alive and active.





Architectural heritage is an integral element of the Finnish identity

350 protected buildings.

Metsähallitus Parks & Wildlife manages historic properties, ranging from the medieval Raseborg Castle to traditional wilderness huts and old Sámi reindeer round-up sites in Lapland.

Easy access to nature and exercise

37 000 km

of forest roads

More than 7 000 km

of marked trails

Some 3 000

rest stops maintained for hikers

nationalparks.fi **retkikartta.fi** *Eräluvut.fi*

 **METSÄHALLITUS**



Voluntary work - good for you and the natural environment

In 2015:

190 different events involving voluntary activities

3 358 volunteers participated

Voluntary workers' input equalled

28 person-years





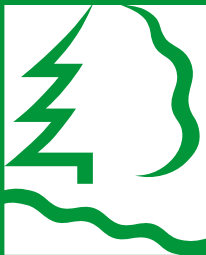
Support for young people's education and employment

In 2015:

More than **33 000** children and young people attended guided tours and workshops

Roughly **400** pupils participated in forest planting

Lessons on the natural world, forestry education and wilderness education



METSÄHALLITUS

www.metsa.fi



www.facebook.com/metsahallitus
www.twitter.com/metsahallitus

